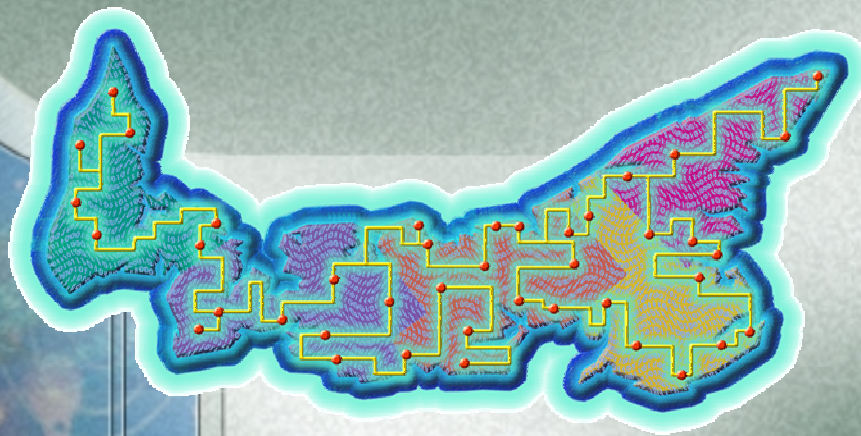


**THE IMPACTS OF INFORMATION
TECHNOLOGY ON SOCIETY:
THE PRINCE
EDWARD ISLAND
EXPERIENCE**



WHERE IS PRINCE EDWARD ISLAND (PEI)?





WHO ARE WE?

Mainly descendents of Irish, Scottish and French settlers

Population 140,000

An Island Province



THE PEI ECONOMY

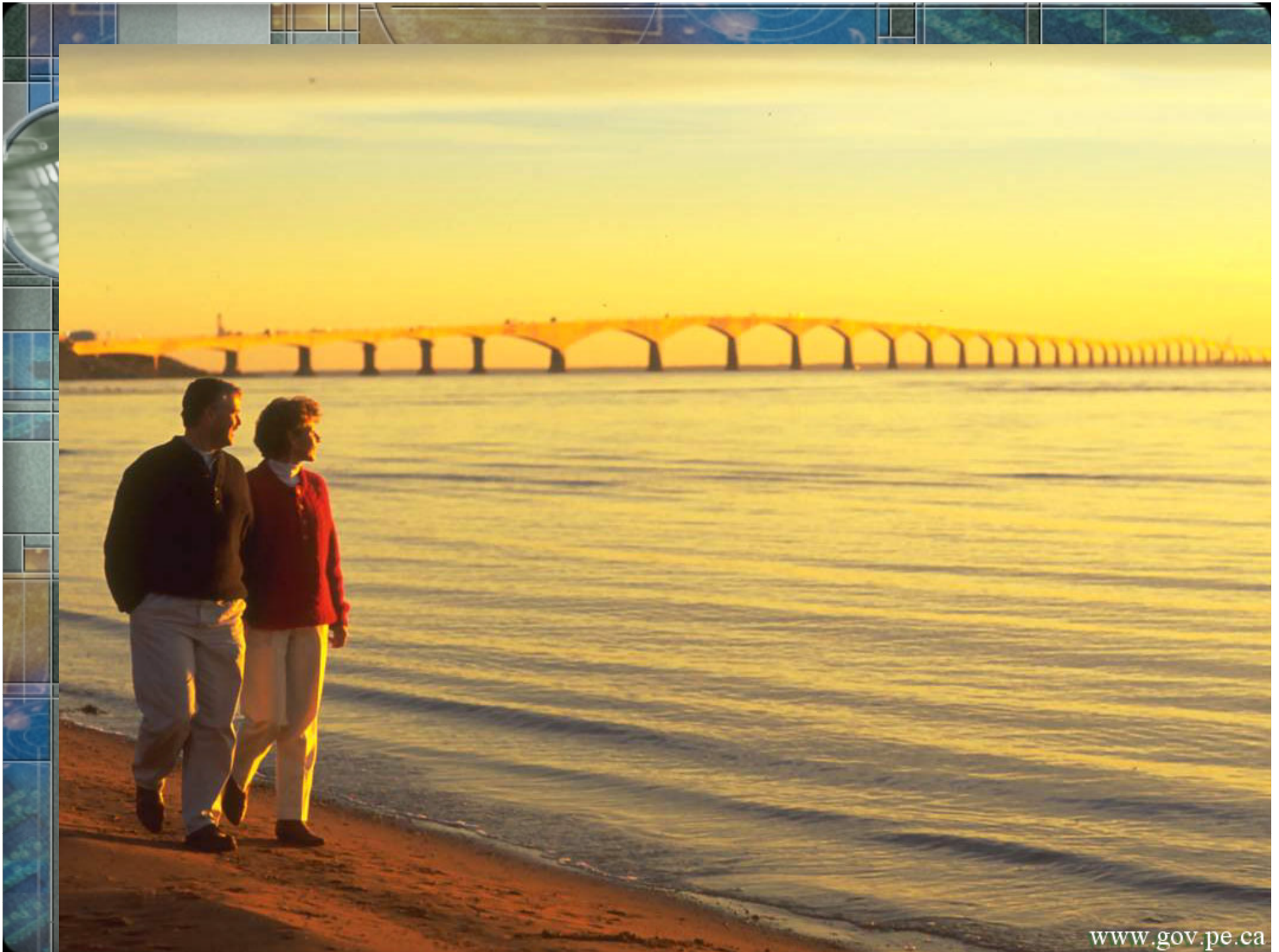
Agriculture – Potatoes, Cattle

Tourism – Beaches, Golf

Fisheries and Aquaculture – Lobster,
Mussels and Oysters

Knowledge Economy Industries –
Information Technology, Biotechnology
and Aerospace







TECHNOLOGY SHOULD ...

- ◆ Make our communities safer, not more dangerous
- ◆ Help us learn, not become a barrier to knowledge
- ◆ Improve our health care, not re-direct medical funding
- ◆ Provide better access to government, not less access
- ◆ Help our economy, not be a financial burden



EDUCATION IS THE FOUNDATION

- ◆ Government commitment is essential
- ◆ In 1998, PEI connected every school to the internet – the first province in Canada – the first nation in the world
- ◆ Find information technology champions (teachers) in the classroom
- ◆ Retire the opponents to technology

Knowledge is the global economic enabler



TELE-HOME-CARE

- ◆ Started as a Tele-hospice project. Terminally ill patients connected to the hospital and spent their last days in their own homes (1998).
- ◆ Has evolved to a broad scope of health care services that can be to home from a hospital.

TELE-HOME-CARE





TELE-HOME-CARE

- ◆ Tele-home-care is the provision of care, instruction and education to clients in their own home through the use of interactive technology (two- way video & audio).
- ◆ The system can allow a nurse or doctor at the hospital to monitor clients blood pressure, pulse readings, live heart, lung and bowel sounds using a stethoscope, oxygen saturation levels, view wounds and dressings, measure blood sugars, etc.



TELE-HOME-CARE

- ◆ Conditions that are being monitored through this technology includes Congestive Heart Failure, Chronic Obstructive Pulmonary Disease (COPD), Hypertension, Diabetes, Asthma , Severe Anxiety, Cancer, Spinal Cord Injury, High-risk Pregnancy, Hospice Care, Mental Health, Medication Compliance, Wound care, Elderly patient care, Post Stroke



TELE-HOME-CARE, RESULTS

- ◆ Better service
- ◆ Happier patients
- ◆ Lower costs
- ◆ 15% fewer visits to the hospital
- ◆ 46% less admissions for overnight stays at the hospital

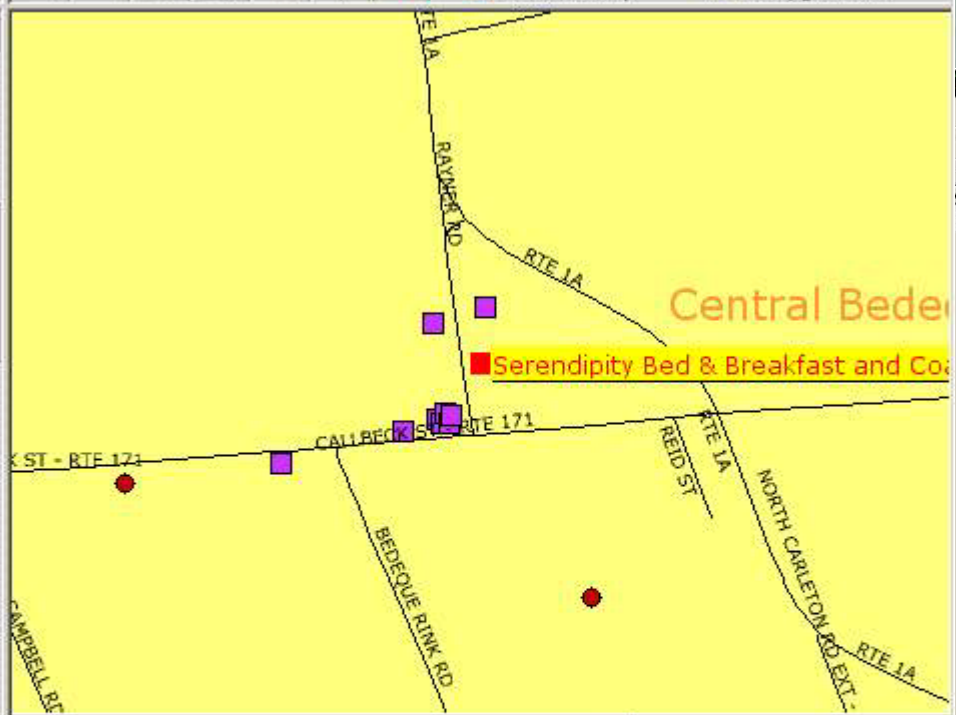


TOURISM

- ◆ A very important part of Prince Edward Island's economy.
- ◆ Most visitors travel long distances by automobile and do most of their vacation planning using the internet.
- ◆ Internet has lowered the costs of tourism promotion in a very competitive marketplace.

- Help
- Top/D
- Help
- Centr
- Serendipity Bed & Breakfast and Coach House Cottage
- Charl
- A House on The Hill Tourist Home
- Admiral's Evergreen Bed & Breakfast
- And Pardon my Garden
- Chantelle's House
- Crestwood House
- Heritage Harbour House Inn
- Masselink's Bed & Breakfast
- Morning Glory on Maple Bed & Breakfast
- Oban House Grand B&B
- Reddin House
- Taste of Home B&B
- Thistle and Shamrock B&B
- Oba
- Osprey Outlook B&B and Cottage Suite on Rustico Bay

- Central Bedeque**
- [Serendipity Bed & Breakfast and Coach House Cottage](#)
- Charlottetown Area**
- [A House on The Hill Tourist Home](#)
- [Admiral's Evergreen Bed & Breakfast](#)
- [And Pardon my Garden](#)
- [Chantelle's House](#)
- [Crestwood House](#)
- [Heritage Harbour House Inn](#)
- [Masselink's Bed & Breakfast](#)
- [Morning Glory on Maple Bed & Breakfast](#)
- [Oban House Grand B&B](#)
- [Reddin House](#)
- [Taste of Home B&B](#)
- [Thistle and Shamrock B&B](#)
- Cymbria**
- [Osprey Outlook B&B and Cottage Suite on Rustico Bay](#)



Places to Stay/Inns and Bed & Breakfasts/3.5 star/

Serendipity Bed & Breakfast and Coach House Cottage

Phone: (902) 887-3540

Email: info@serendipitypei.com

[Visit Website](#)



- Cymbria**
- [Osprey Outlook B&B and Cottage Suite on Rustico Bay](#)

re centre on that location and zoom in by a factor of two. More map detail appears as you zoom in closer, but you can see less of the Island.





TELE-DEMOCRACY IS

- ◆ Making our political leaders more accountable
- ◆ Providing all citizens with a voice
- ◆ Having more effective consultation on important issues
- ◆ Lowering the cost of democracy



TELE-DEMOCRACY IN CANADA

TODAY

- ◆ Political donations over \$100 are posted on the internet
- ◆ Live-streaming of legislative proceedings are broadcast on the internet
- ◆ All elected officials have email addresses on line and now receive over 90% of correspondence from citizens via the web
- ◆ Citizens can easily consult with government on important policy issues through "on-line" committee hearings
- ◆ E-voting will soon be an option



BILL DROST

CHIEF INFORMATION OFFICER

GOVERNMENT OF PRINCE EDWARD ISLAND

BCDROST@GOV.PE.CA



www.gov.pe.ca